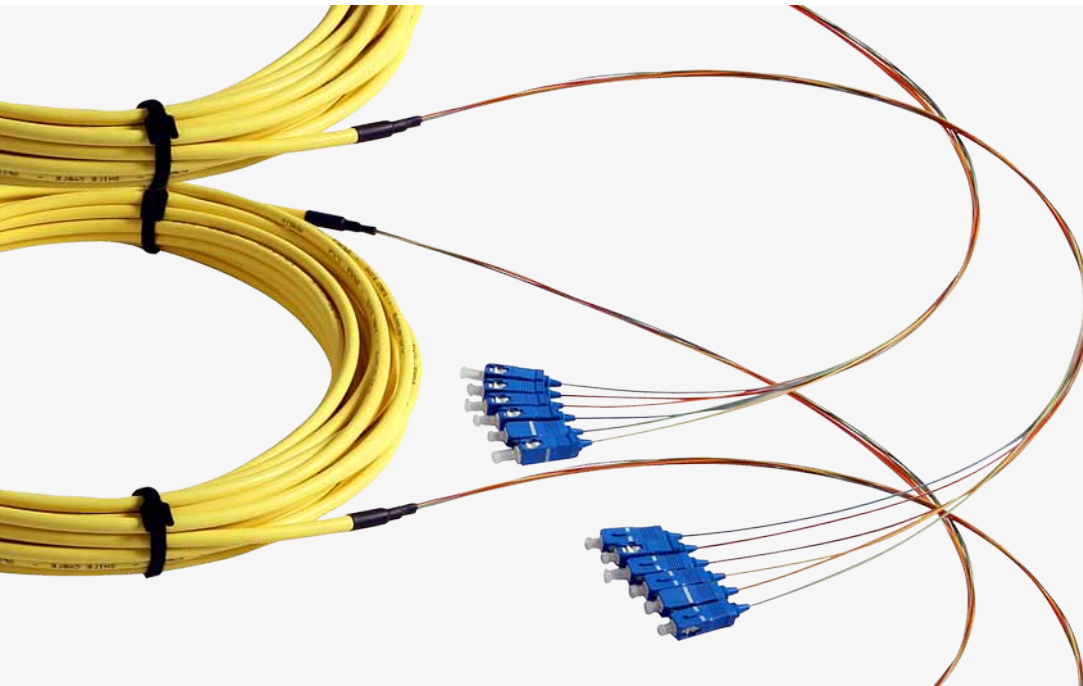


Light Line System



Light Line system is a plug and play cable, compact and economic for use exclusively in a controlled environment.

It is ideal for connecting high density distribution subracks (for example CFS3 system) or for fiber to the desk connections.

The length of the cable and the typology of the fiber and the connectors are defined by the client and the length of the single 0.9mm diameter wire can be adapted in the installation phase or defined at the time of ordering; if need be we can provide a tube which protects the terminations whilst they are being laid. The product is sent in specially designed packaging and includes the test report.

Installation does not require expensive equipment or specialised personnel, the cable can be re-used further to adds, moves or change in the network.





Features

- Ready to use
- For indoor systems
- 4-24 fibers
- Factory assembled and factory tested
- No splice or divider
- Cable length and connector type defined by client
- No need for qualified personnel or expensive equipment for the installation
- Re-installable

Applications

- Backbone in LAN
- Floor cabling (FTTD)
- Internal wiring EN 50173-1

CABLE MODEL

Specification	Fiber count					
	4	6	8	12	16	24
Cable outer diameter	5mm	5,5mm	6mm	6,5mm	7mm	8mm
Single cable diameter	900µm +/- 50 µm					
Weight	26 kg/km	30 kg/km	35 kg/km	45 kg/km	50 kg/km	65 kg/km
Max tensile strength	280 N	208 N	280 N	340 N	340 N	400 N
Crush resistant	3000 N/100mm					
Cable min bending radius in service	50mm	50mm	50mm	50mm	75mm	115mm
Single cable min bending radius	30 mm in service					
Jacket material	LSZH					
Temperature range in service	-20 +70 C°					

L L - A - B B - C - D D / E E - F F F F

A Select cable design

- A = Non armoured, LSZH jacket
- B = Glass armoured, LSZH jacket
- x = Other

B B Select number of fibers

- 0 4 = 4 fibers
- = ... fibers
- 1 2 = 12 fibers
- = ... max 24 fibers

C Select fiber type

- N = NZ-DS
- 9 = SSingle mode 9/125
- 5 = 50/125
- O = 50/125 OM3 300
- M = 50/125 OM3 550
- 6 = 62,5/125

D D Select connector type side A

- 2 0 = ST
- 3 0 = FC/SPC
- 3 5 = FC/APC small key 2.00 mm
- 4 0 = SC/SPC
- 4 4 = SC/APC
- 5 0 = LC/SPC
- 5 5 = LC/APC
- D D = for a complete list
please see jumper cable code

E E Select connector type side B

- E E = Use option from item DD
- o o = No connector

F F F F Select cable length in meters *

- 3 5 = 35 metri
- 1 2 . 5 = 12.5 metri

* Cable length from connector to connector